

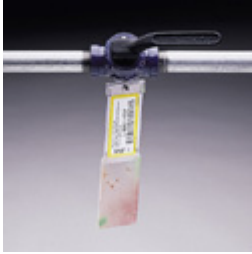
BRADY B-748 STAINLESS STEEL TAG

TDS No. B-748
Effective Date: 02/15/2001

Description:

Brady B-748 is a high performance tag comprised of a stainless steel panel, a polyester label, graphics protection, and optional holes. It is available in various sizes.

Details:



Use:

Brady B-748 tags are designed for use in Pulp and Paper, Petrochemical, Utility, Commercial, Institutional and other harsh industrial environments. The tag construction is recommended for both indoor and outdoor use.

Special Properties:

The tag's composite construction featuring protected graphics allows use in harsh environments.

Substrate Type:

Polyester overlaminated printed polyester fused with a thermosetting adhesive to 26 ga. Type 316 stainless steel.

Standard Material Colors:

Yellow, blue, green, red and white (meets ANSI A13.1 - 1981 Scheme for the Identification of Piping Systems)

Standard Legend Color:

Black

Thickness (ASTM D 1593):

Overlamine: 0.0015 in. (0.038mm)

Polyester: 0.005 in. (0.127mm)

Stainless Steel: 26 ga.

Abrasion Resistance (Method 5306 of U.S. Federal Test Method Std. No. 191A):

CS-17 wheels, 1000 g wts.

Legend withstands up to 600 cycles.

Gloss:

105 Gardner Units

Service Temperature:

-40°F to 248°F (-40°C to 120°C)

Average Outdoor Durability:

5-7 years (Average expected outdoor life of product will vary with climate, tag color, mounting techniques, and other environmental exposures.)

Chemical Resistance:

REAGENT	7 DAY IMMERSION	DIP TEST	RUB TEST
30% Sulfuric Acid	F	F	NE
10% Sulfuric Acid	F	NE	NE
30% HCl	F	NE	NE

10% HCl	F	NE	NE
50% NaOH	F	NE	NE
10% NaOH	F	NE	NE
Methyl Ethyl Ketone	F	F	NE
Acetone	F	F	NE
1,1,1-Trichloroethane	F	F	NE
Methanol	F	F	NE
IPA (Isopropanol)	F	NE	NE
ASTM #3 Oil	NE	NE	NE
SAE 20 Oil	NE	NE	NE
Alconox®	NE	NE	NE
Toluene	F	F	NE
Mineral Spirits	F	F	NE
Glacial Acetic Acid	F	NE	NE
5% Acetic Acid	NE	NE	NE
Diesel Fuel	NT	NT	NT
Heptane	F	NE	NE
Cellosolve Acetate	F	F	NE
Conc. Ammonia	F	NE	NE
10% Ammonia	F	NE	NE
Turpentine	F	F	NE
Kerosene	F	NE	NE
Water	NE	NE	NE
Gasoline	NT	NT	NT
10% NaCl	NE	NE	NE

NE = No Effect

NT = Not Tested

F = Failed (affected Sample)

7 Day Immersion: Immersed in reagent for 7 days.

Dip Test: Five 10 minute dips in reagent with 30 minute recovery.

Rub Test: Rubbed sample for 1 minute with swab soaked in reagent.

Shelf Life:

Indefinite when stored at 70°F (21°C) and 40% to 50% R.H.

Trademarks:

Alconox® is a registered trademark of Alconox Co.

Signmark® is a registered trademark of Brady Worldwide, Inc.

ANSI: American National Standards Institute

ASTM: American Society for Testing and Materials (U.S.A.)

SAE: Society of Automotive Engineers (U.S.A.)

All S.I. Units (metric) are mathematically derived from the U.S. Conventional Units.

Note: All values shown are averages and should not be used for specification purposes.

Test data and test results contained in this document are for general information only and shall not be relied upon by Brady customers for designs and specifications, or be relied on as meeting specified performance criteria. Customers desiring to develop specifications or performance criteria for specific product applications should contact Brady for further information.

Product compliance information is based upon information provided by suppliers of the raw materials used by Brady to manufacture this product or based on results of testing using recognized analytical methods performed by a third party, independent laboratory. As such, Brady makes no independent representations or warranties, express or implied, and assumes no liability in connection with the use of this information.

WARRANTY

Brady products are sold with the understanding that the buyers will test them in actual use and determine for themselves their adaptability to their intended uses. Brady warrants to the buyers that its products are free from defects in material and

workmanship, but limits its obligation under this warranty to replacement of the product shown to Brady's satisfaction to have been defective at the time Brady sold it. This warranty does not extend to any persons obtaining the product from the buyers. This warranty is in lieu of any other warranty, express or implied, including, but not limited to, any implied warranty of merchantability or fitness for a particular purpose, and of any other obligations or liability on Brady's part. Under no circumstances will Brady be liable for any loss, damage, expense, or consequential damages of any kind arising in connection with the use, or inability to use, Brady's products.

Copyright 2016 Brady Worldwide, Inc. | All Rights Reserved
Material may not be reproduced or distributed in any form without written permission.

Brady North America | 6555 W. Good Hope Rd | Milwaukee, WI 53223 | USA | Tel: 414-358-6600 | Fax: 800-292-2289